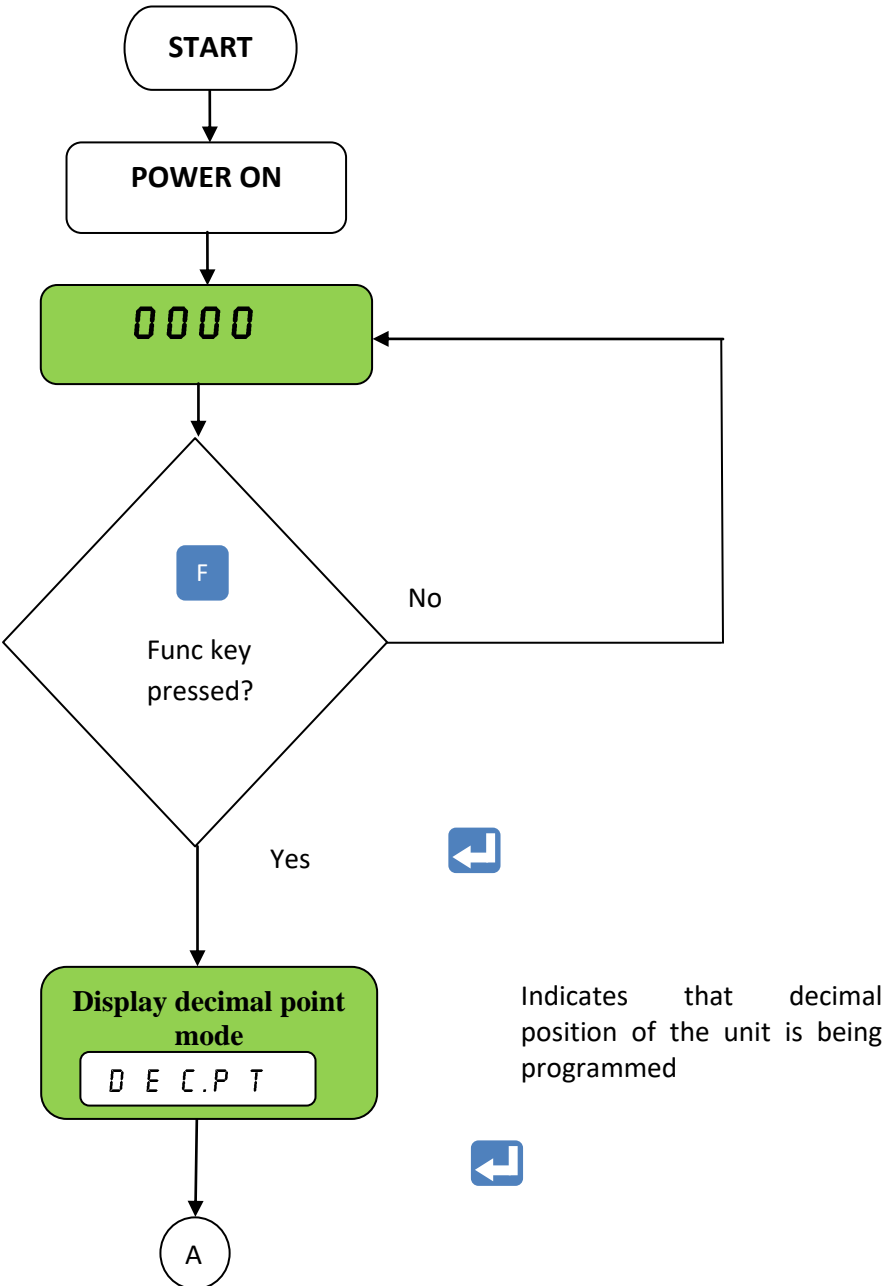


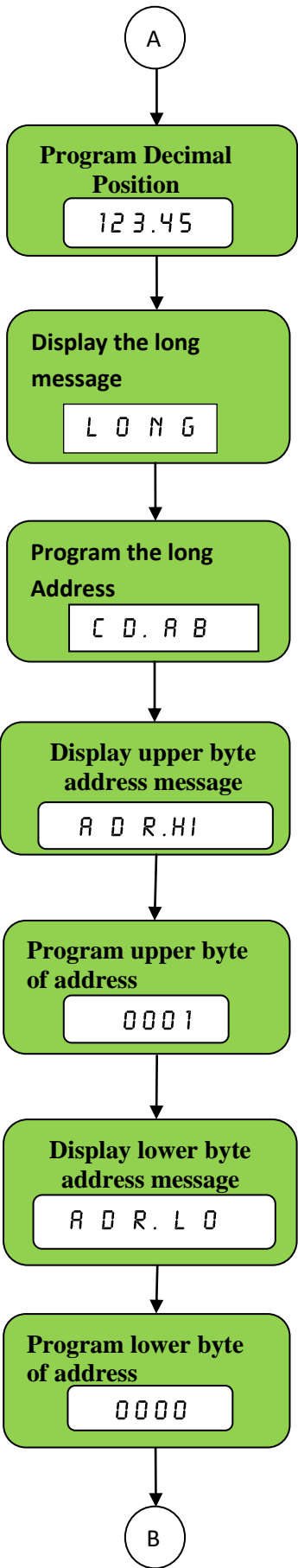
Programming Manual for Sleek 901C Process Indicator

Modes of operation:

- 1. **Program Mode:** In this mode user can program the device parameters.

For Program Mode please refer following flow chart:





By Inc. & Dec. keys user can select decimal position on the display.



It indicates long Integer format. 4 options as shown below are available.



User can selected between ABCD, CDAB, BADC and DCBA using Inc.& Dec. keys.



Indicates that upper byte of the address is being programmed. This address is the location where user will write the desired process value which is to be displayed.



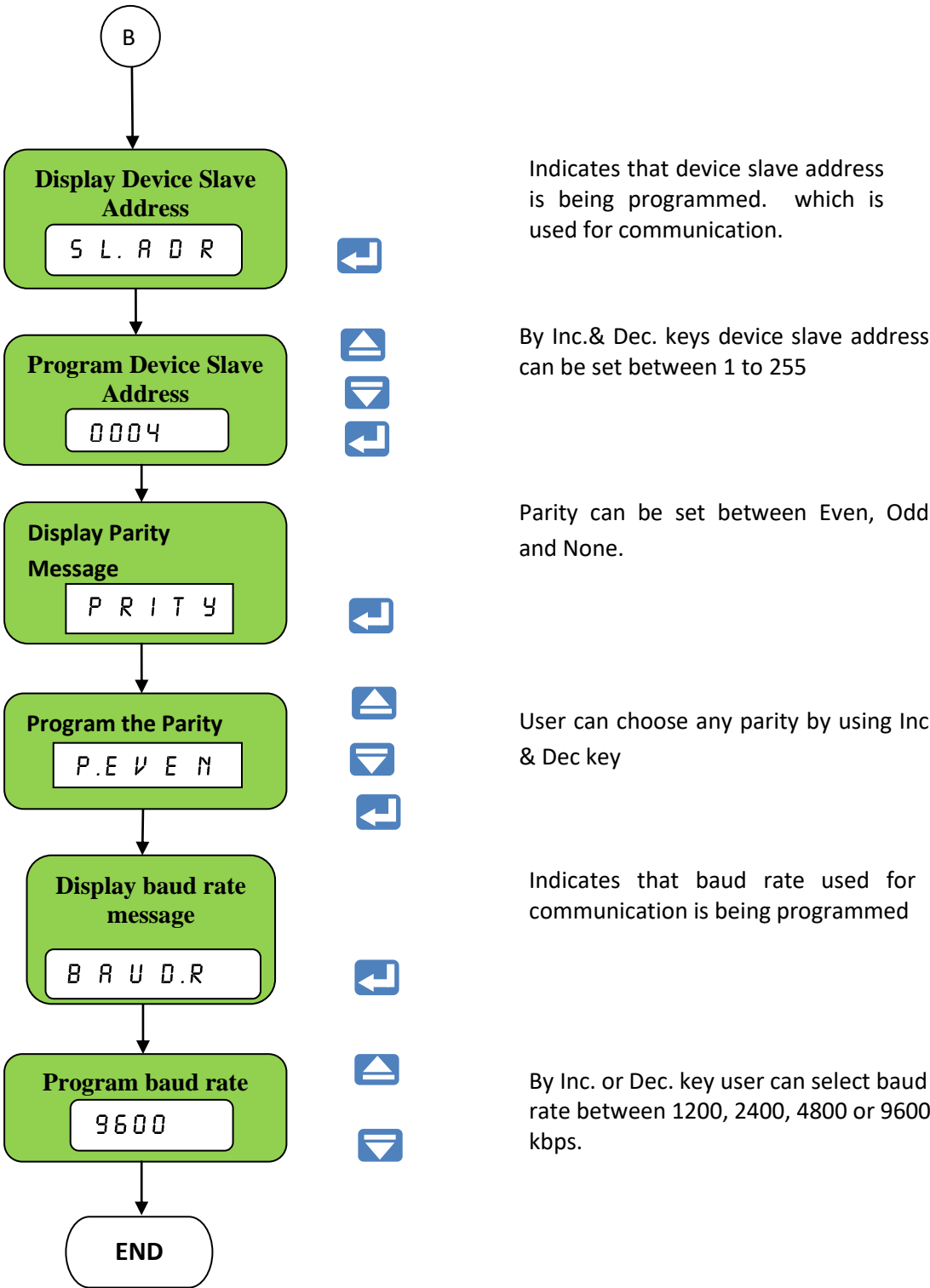
By Inc. & Dec. keys user can program the upper byte of the address value in decimal format.



Indicates that lower byte of the address is being programmed. This address is the location where user will write the desired process value which is to be displayed.



By Inc. & Dec. keys user can program the lower byte of the address value in decimal format.



Error Case:

1) If user doesn't connect any master device to this unit or there is no communication with the set device address, then device will display following message.



2) If the value is greater than five digit (99999) then **high** message will displayed as shown as below.



SPECIFICATIONS:

Model	: Sleek 901C
Input	: via RS 485 (Slave device)
Indication	: 5 digit 7 segment 100 mm RED LED
Programming	: 4 keys membrane keypad
Interface	: RS 485 (2 wire)
Protocol	: Modbus RTU
Function supported	: 16
Data type	: Long Integer
Integer format	: Selectable between ABCD, CDAB, BADC and DCBA.
Baud rate	: Settable between 1200, 2400, 4800 and 9600 kbps
Data bits	: 8, Stop bits: 1, Parity: Selectable between Odd, Even and None.
Power supply	: 230 VAC, +/- 10 %, 50 Hz
Operating Temperature	: 5 to 55 deg C.
Mounting	: Handing type
Enclosure	: 1.6 mm CRCA sheet
Dimensions	: 504 x 168 mm

Front view:



Terminal Details:

