



INTRODUCTION

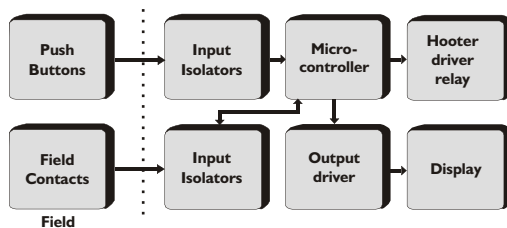
Annunciation systems are used to give audio and visual indication of fault conditions. Annunciators play an important role of watching the fault conditions and indicating them to help in speedy location and correction.

ESD's "ALERT" series alarm annunciator system is suitable for 4/6/8/12/16/24/32/48 inputs and is available in different DIN standard cutouts or 19" racks. The series is designed using powerful microcontroller and highly reliable electronic components.

The Annunciators are connected to **potential free** field contacts (as inputs). When a fault condition occurs in any one of the connected inputs, annunciator indicates the fault by flashing the respective window (visual indication) and also gives signal to the Hooter (audio indication).

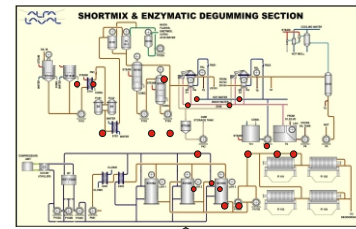
The Alert series accepts potential free contacts as its inputs, with a selection facility for 'NO' (make to alarm) and 'NC' (break to alarm). User can connect a hooter through relay for audio alarm. Facility to connect external 'Test & Accept' push buttons is available. Multiple flashing rates are provided for differentiating various fault types.

PRINCIPLE OF OPERATION



The single chip microcontroller of the Alert series continuously monitors all the connected inputs. If a fault occurs in any of the inputs, then it is detected by the CPU. According to the nature of the fault, the CPU will decide the status of the window and hooter. Faults are classified as :

1. Persisting fault but not accepted
2. Persisting fault, but accepted
3. Momentary fault disappeared before accepting



FEATURES

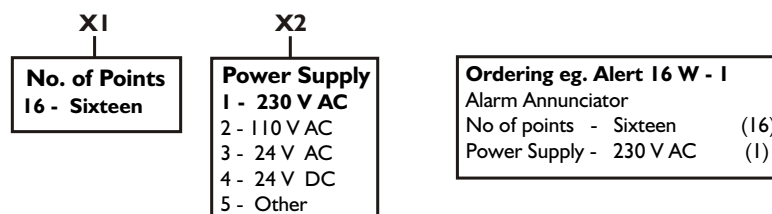
- ✓ Highly compact and light weight
- ✓ LED indicators consume 90% less power as compared to lamps & hence avoid heat generation
- ✓ Unlimited LED life, no replacement required
- ✓ Super bright LEDs for long distance visibility
- ✓ Fault condition setting site selectable
- ✓ Fast response time
- ✓ Three flashing rates indicate different types of faults
- ✓ Facility to connect hooter
- ✓ Optically isolated inputs
- ✓ Various sizes & fonts for window inscription.
- ✓ Choice for Photo positive or Photo negative
- ✓ Window inscription
- ✓ Auto reset / Manual reset / First Up site selectable
- ✓ *System Healthy* indication by continuous flashing GREEN LED on front facia
- ✓ Wide range of window sizes and configurations
- ✓ Fail safe logic for hooter relay
- ✓ Maximum MTBF and minimum MTTR

SPECIFICATIONS

Model	: Alert 16W	Push Buttons	: NO type push buttons for Test, Accept and Reset to be connected externally
No of Points	: 8 pt / 16 pt	Logic	: Microcontroller based
Contact type	: Make or Break to alarm selectable in pair	Response time	: 10 milliseconds
Indication	: Externally connected RED LED's on mimic	Operating sequence	: 4 ISA standard sequences A) Auto reset (ISA : 1B) factory set B) Manual reset (ISA : 2C) C) Auto reset first up (ISA : 4A) D) Manual reset first up (ISA : 4A1)
Flash rate	: 22 flashes per minute (blink) 40 flashes per minute (fast blink, available for first up models)	Mounting	: Wall / Chassis
Output-1	: Relay change over contact for hooter, 1 amp resistive at 230 V AC	Mounting CTC	: 148 (W) x 142 (H) mm
Output- 2 (optional)	: 10 V DC @ 10 mA to drive LEDs individually for each fault	Dimensions	: 158 (W) x 153 (L) x 60 (H) mm
Power supply	: 230 V AC, +/- 10 %, 50Hz with earth	Enclosure	: Mild steel CRCA sheet with powder coating
Power consumption	: 6 VA	Termination	: Screwed type suitable for 2.5mm ² wire
Relative humidity	: Less than 90% non condensing	Weight	: 1 kg approximately
Ambient temperature	: 0 to 55°C		
System Healthy	: Continuously flashing GREEN LED		

ORDERING INFORMATION

Alert 16W



NOTE: For window type annunciation series requirements, please refer catalogue nos.

1. ESD/AA/4602
2. ESD/AA/4603
3. ESD/AA/4604
4. ESD/AA/4605
5. ESD/AA/4606

ALSO SELECT
ESD ...

BACK END

- ✓ Controllers
- ✓ Scanners with Controllers

SAME RANGE

- ✓ Window Type Alarm Annunciators
- ✓ Hooters

FRONT END

- ✓ Automation Panels
- ✓ PLC



**ELECTRONICS
SYSTEMS AND DEVICES**
Process Control Instrumentation

ESD HOUSE,
55, Hadapsar Indl. Estate,
Pune - 411013 (INDIA).

Phone : (020) 26819611 to 15

E-mail : sales@esd-india.com

Web : www.esd-india.com



ESD/AA/4609